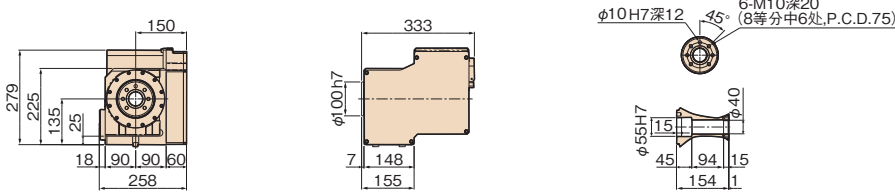


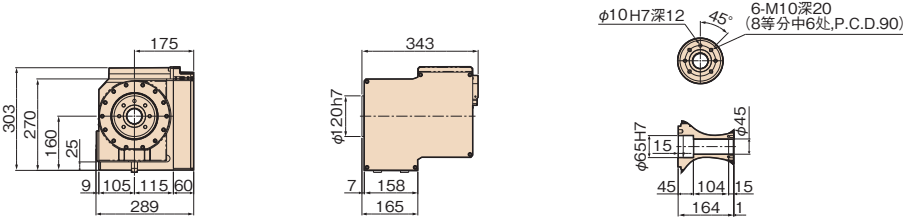
规格图

单位:mm

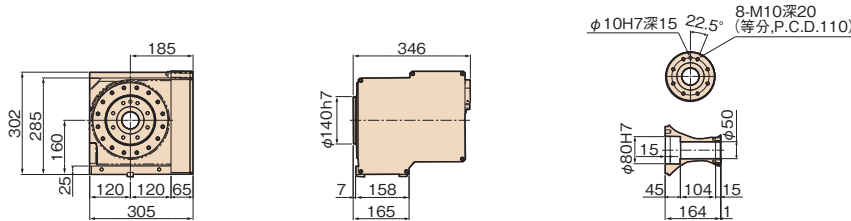
RWE/RWA-160R,B



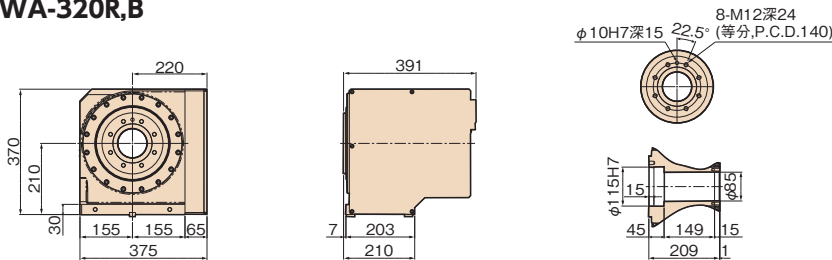
RWE/RWA-200R,B



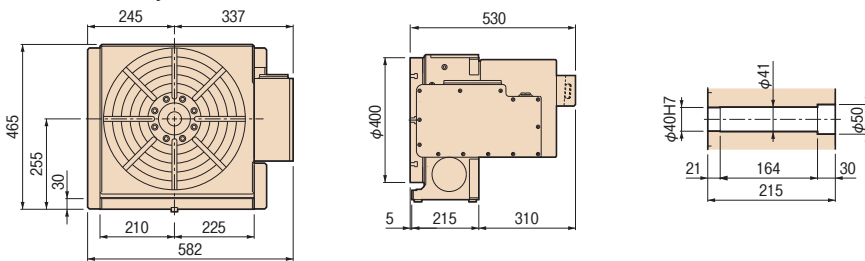
RWA-250R,B



RWA-320R,B



RNCV-401R,B



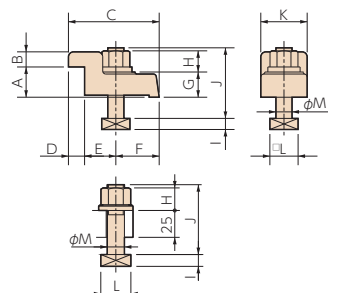
注)上述外观尺寸为FANUC规格。其他厂家的伺服马达时,尺寸有变大。

夹紧齿块、螺栓

型号	使用数	适用T槽齿距	适用T槽宽度	A	B	C	D	E	F	G	H	I	J	K	L	M	
RWE/RWA-160R,B	—	2	—	14	—	—	—	—	—	—	17	8	60	—	23	12	
RWE/RWA-200R,B	—	2	—	18	—	—	—	—	—	—	21	11	65	—	28	16	
RWA-250R,B	I	4	50~100	18	25	12	80	12	33	35	22	21	11	65	40	28	16
RWA-320R,B	I	4	50~132	18	30	15	90	16	31	43	25	21	11	70	46	28	16
RNCV-401R,B	I	4	55~155	18	30	15	90	16	31	43	25	21	11	70	46	28	16

注) 1. 安装指定的上述T槽齿距外的齿距时, 夹紧齿块、螺栓等可以从市场上购买, 或者请从我公司特殊订单产品(选项)中订购。
注) 2. 限于RWE/RWA-160R,B、RWE/RWA-200R,B的夹紧齿块螺栓。

型号 I



RBS

TBS

RWE/RWA-RN

RWE/RWA-B RNCV-B

RNCM

RBA

RBA-K RNCK

RCH RNC

RCV RNCV

RN-N (多轴)

TWA/TN

TTNC

THNC

TTNC-N (多轴)

RC RH

RUA

TSUA

RDS

RTV RTT

RCB

单轴NC 控制器

附件

选项

资料