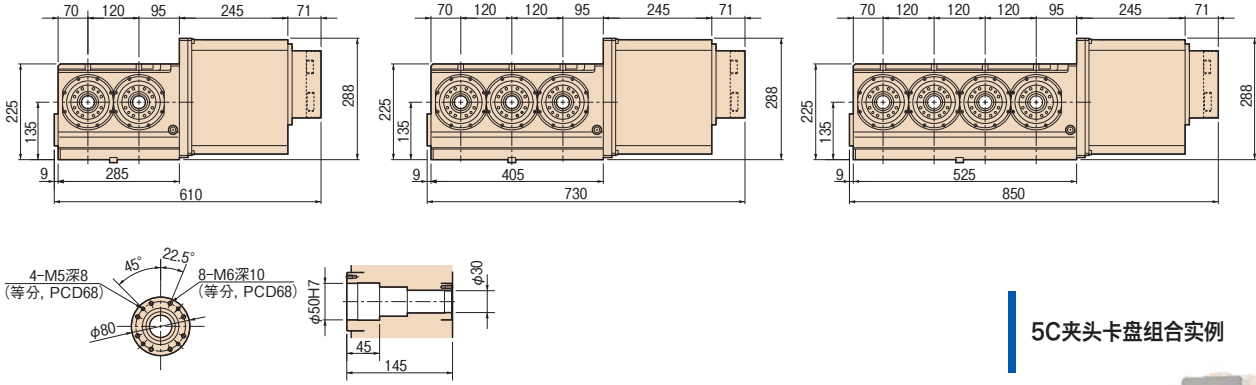


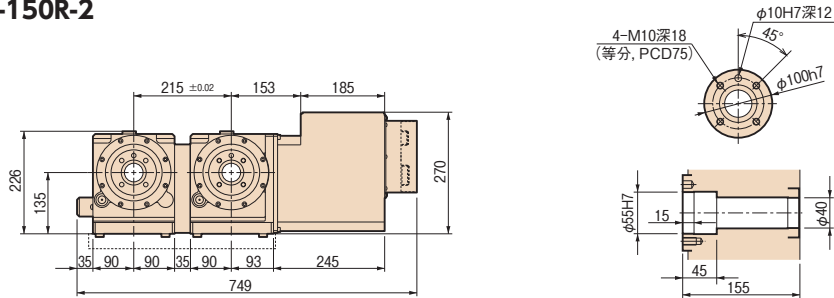
规格图

单位:mm

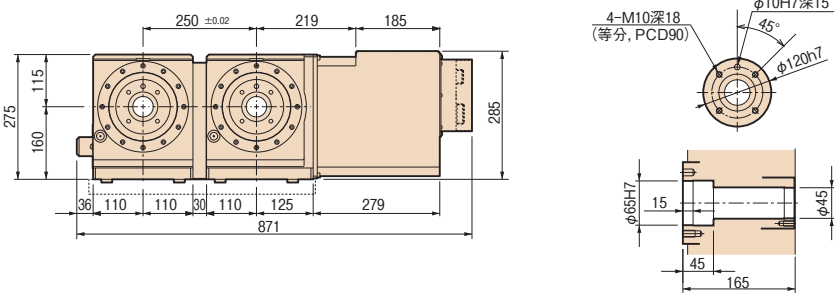
RN-100R-2/3/4



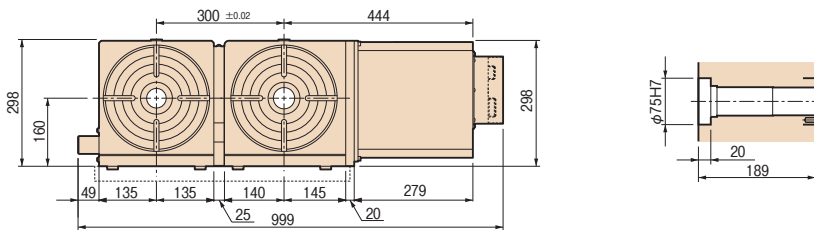
RN-150R-2



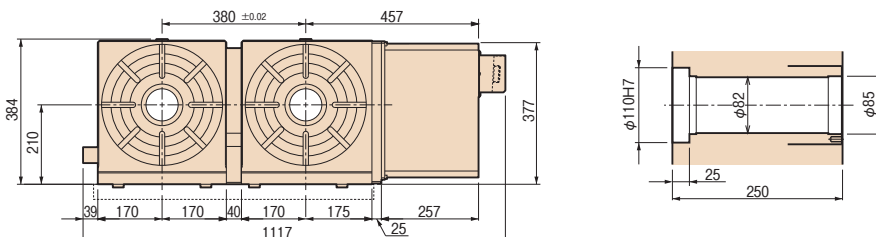
RN-200R-2



RN-250R-2



RN-300R-2



注)上述外观尺寸为FANUC规格。其他厂家的伺服马达时,尺寸有变大。

5C夹头卡盘组合实例



旋转接头组合实例



- RBS
- TBS
- RWE/RWA/RN
- RWE/RWA-B/RNCV-B
- RNCM
- RBA
- RBA-K/RNCK
- RCH/RNC
- RCV/RNCV
- RN-N** (多轴)

TWA/TN

TTNC

THNC

TTNC-N (多轴)

RC/RH

RUA

TSUA

RDS

RTV/RTT

RCB

单轴NC控制器

附件

选项

资料

RT-54

对面式φ300/5连转台涡轮叶片加工系统

为了除去叶片加工变形,通过油压缸保持稳定的拉伸状态,控制同期运行,将误差降低到最小。

